

Connect with your essence

A special place with 64 apartments and penthouses designed for you to feel at home. Each of them, with 2 or 3 bedrooms, offers bright spaces, with terraces and gardens that invite you to relax and enjoy. This is more than just a place to live; it's a space created for you to enjoy your best moments.

Construction Elements

FOUNDATION AND STRUCTURE

The foundation will be executed with reinforced concrete footings in compliance with current regulations. The structure will consist of reinforced concrete walls and pillars, waffle slabs, and flat slabs.

FACADES

The façade will be finished with a double layer of ceramic brick, plaster on the interior side, and SATE (Exterior Thermal Insulation System) on the exterior side for greater waterproofing and insulation.

EXTERIOR CARPENTRY

The exterior carpentry will be lacquered aluminum with thermal break, double glazing with an intermediate air chamber (Climalit type), and tilt-and-turn, casement, or sliding openings (depending on each case). Motorized blinds in the same color as the carpentry will be installed in living rooms and bedrooms.

Flooring and Wall Finishes

FLOORING, INTERIOR WALL FINISHES AND FALSE CEILINGS

Interior walls will be finished with smooth high-quality paint (in white). False ceilings will be finished in smooth matte white paint.

Bathrooms will be completed with top-quality finishes.

Kitchens will feature various types of finishes, combining paint with top-quality tilework.

EREBOR BEIGE

HALTON CREAM

EREBOR WHITE

Homes

Inside the homes, you can choose between laminate flooring or large-format porcelain stoneware of top quality, for the living room, hallway, and bedrooms.

Kitchen and bathroom finishes will be made with top-quality porcelain stoneware, with different combinations depending on the bathroom. The terraces will be finished with non-slip porcelain stoneware.

Homes with gardens will include both landscaped areas with vegetation and paved areas.

The colors and tones of the materials may be subject to modifications due to screen calibration or document printing.

VIELHA NATURAL



Interiors

INTERIOR PARTITIONS

Separation between homes will be made with perforated sound-absorbing brick partitions, rock wool acoustic insulation, and drywall cladding (Pladur type) on both sides.

Internal divisions within each home will be made with dry partitions (Pladur type) on both sides. Intermediate floors will include acoustic insulation with anti-impact membrane.

INTERIOR CARPENTRY

The entrance door will be armored, with reinforced hinges and a security lock. Interior doors will be sliding or hinged, as applicable, with a smooth white lacquered finish.

Modular built-in wardrobes will be lined, equipped with an overhead shelf and a hanging rail. The doors will match the color and finish of the rest of the home's interior doors.

The colors and tones of the materials may be subject to modifications due to screen calibration or document printing.

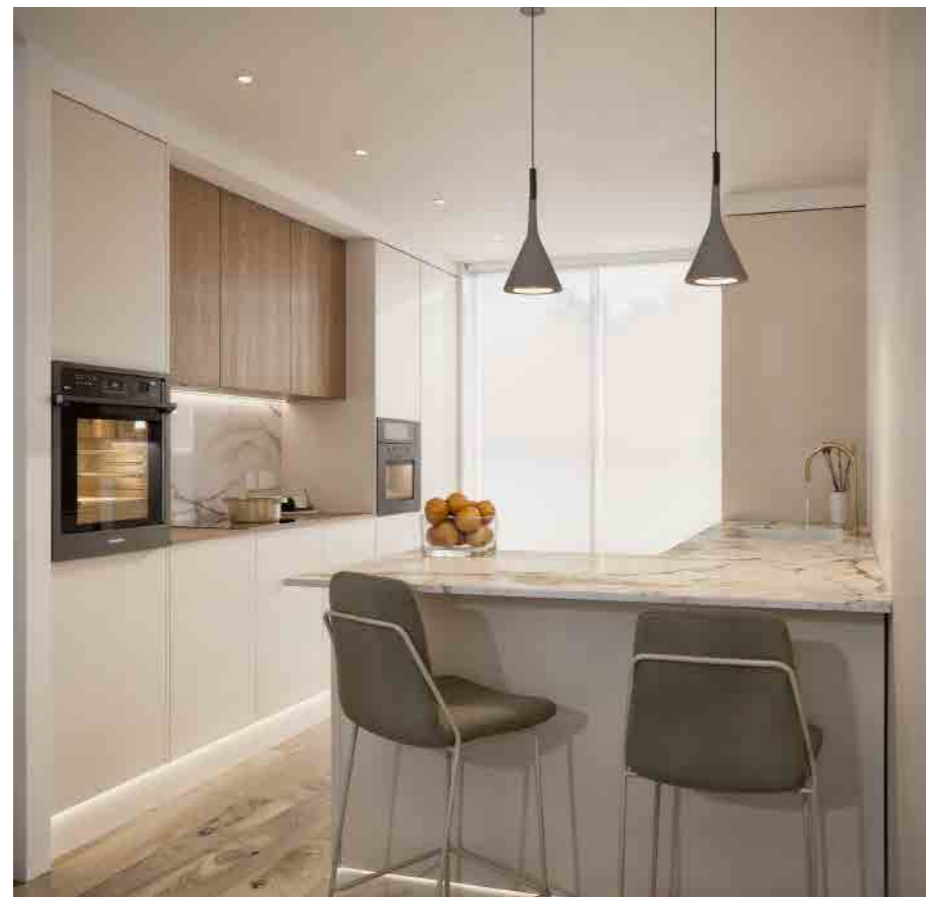


Kitchens

Kitchen furniture will include both upper and lower cabinets, with a "Silestone"-type countertop. Two finish options will be available.

The sink will be an under-mounted stainless steel single basin, with a single-lever faucet.

The kitchen will be fully equipped with: extractor hood, ceramic hob, electric oven and microwave, dishwasher, and refrigerator from Bosch or similar brand.



Bathrooms

SANITARYWARE AND FAUCETS

The sanitaryware will be wall-hung, made of white vitrified porcelain of top quality.

The sink will consist of a suspended vanity unit and a mirror.

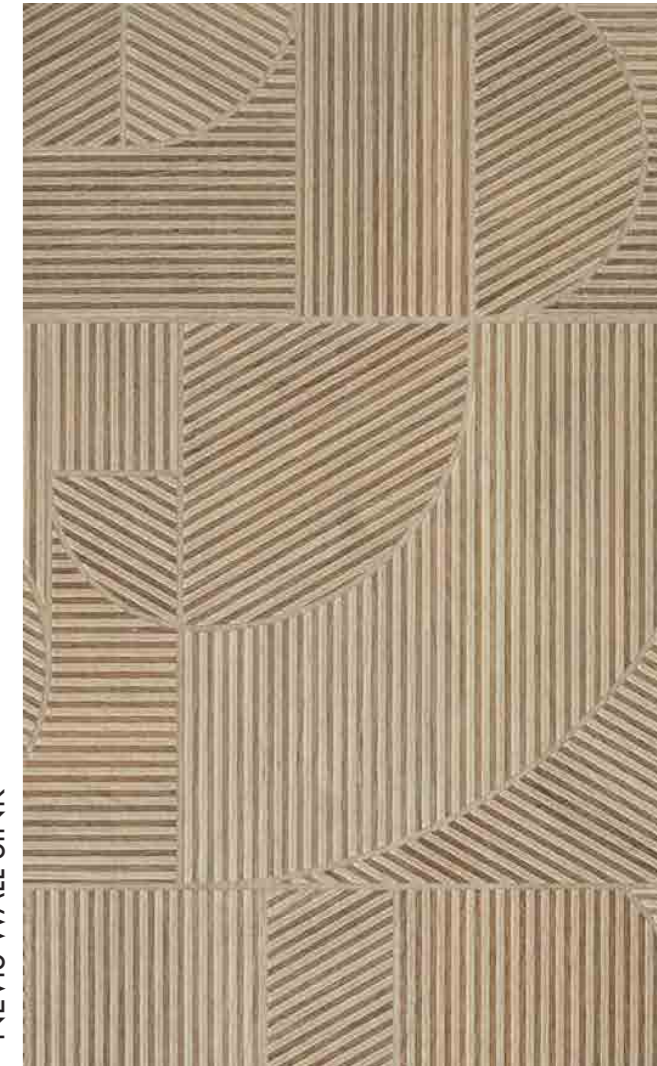
Bathrooms will be equipped with anti-slip resin shower trays, glass shower screens, and thermostatic faucets with rain shower heads.

Faucets will be from top brands, with dual-jet diffusers for greater flow and temperature control precision.

The colors and tones of the materials may be subject to modifications due to screen calibration or document printing.



LIFE GREEN SHOWER WALL



NEVIS WALL SINK

Installations

CLIMATE CONTROL AND HEATING

Homes will include an arothermal system for hot water production and a hot/cold pump distributed via ducts.

There will be a photovoltaic electrical supply system to reduce energy consumption in the home.

Bathrooms will have individual electric underfloor heating.

ELECTRICITY AND TELECOMMUNICATIONS

Full electrical installation in the homes.

TV/FM and telephone connections in all rooms, except bathrooms. Terraces and solariums will include waterproof light points and lighting fixtures.

All homes will include top-quality switching mechanisms and video intercom systems.

Parking

GARAGE

The project includes a garage with remote-controlled automatic vehicle access.

Direct access from the garage to the homes will be provided by high-efficiency elevators with safety and emergency systems (communicating with all floors), sliding automatic doors, and floor indicators.

Garage flooring will be troweled concrete with a polished finish. Pillars and walls will be painted up to a height of 1 meter.

The garage will include a fire detection system according to current regulations.

Pre-installation for electric vehicle charging points will be included.



INCLUDED

- Fully equipped kitchen with premium Bosch (or similar) appliances
- -Complete bathrooms with furniture, mirrors, and all other bathroom accessories
- -Motorized self-locking blinds
- -Underfloor heating in bathrooms
- -Fully furnished bathroom units
- -Air conditioning
- -Heating



OPTIONS

- Home automation system
- Airzone (climate zoning system)
- Fridge and dishwasher paneling
- Premium Plus appliances

In SOLARIUMS:

- Jacuzzi
- Built-in barbecue

In HOMES WITH A GARDEN:

- Pool
- Built-in barbecue
- Extra paving
- -Extra landscaping



Common Areas

The development includes a large beach-style pool area, with purification systems, underwater night lighting, and water filtration. There will also be a shower area and ample outdoor space for walking and circulation.

The children's play area will include highly durable elements, with rubber cushioned flooring in multiple colors.

The outdoor gardens will feature various Mediterranean species suited to the local terrain and climate.

There will be a gym equipped with fitness equipment.

The multifunctional rooms of the Social Club, Kids Garden, and Coworking area will be fully equipped and independently accessible.

All common areas will have LED or low-energy lighting installations, as well as a video surveillance system.





DSB

DESTINY
by Bergen